

W 6208-2RS1 Deep groove ball bearings

- Popular item

Deep groove ball bearings

Bearing data

[Tolerances](#),

Normal (metric), P6, P5, Normal (inch),

[Radial internal clearance](#),

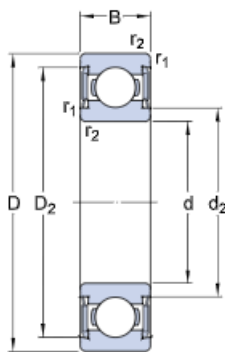
Matched bearing pairs, Stainless steel
 $d < 10$ mm, Other bearings

Bearing interfaces

[Seat tolerances for standard conditions](#),

[Tolerances and resultant fits](#)

Technical specification

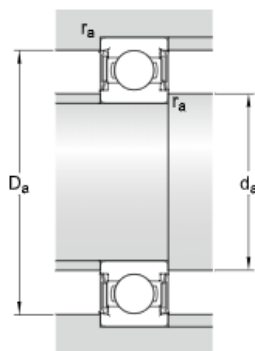


DIMENSIONS

d	40 mm	Bore diameter
D	80 mm	Outside diameter
B	18 mm	Width
d_2	≈ 50.1 mm	Recess diameter
D_2	≈ 70.78 mm	Recess diameter
$r_{1,2}$	min. 1.1 mm	Chamfer dimension

ABUTMENT DIMENSIONS

d_c min.	46.5 mm	Diameter of shaft abutment
d_c max.	50 mm	Diameter of shaft abutment
D_c max.	73.5 mm	Diameter of housing abutment
r_a max.	1 mm	Radius of shaft or housing fillet



CALCULATION DATA

C	25.1 kN	Basic dynamic load rating
C ₀	17.6 kN	Basic static load rating
P _u	0.75 kN	Fatigue load limit
	5 600 r/min	Limiting speed
k _r	0.03	Minimum load factor
f ₀	14	Calculation factor

MASS

	0.36 kg	Mass bearing
--	---------	--------------

TOLERANCE CLASS

Normal	Dimensional tolerances
Normal	Radial run-out